



# Future Land Use

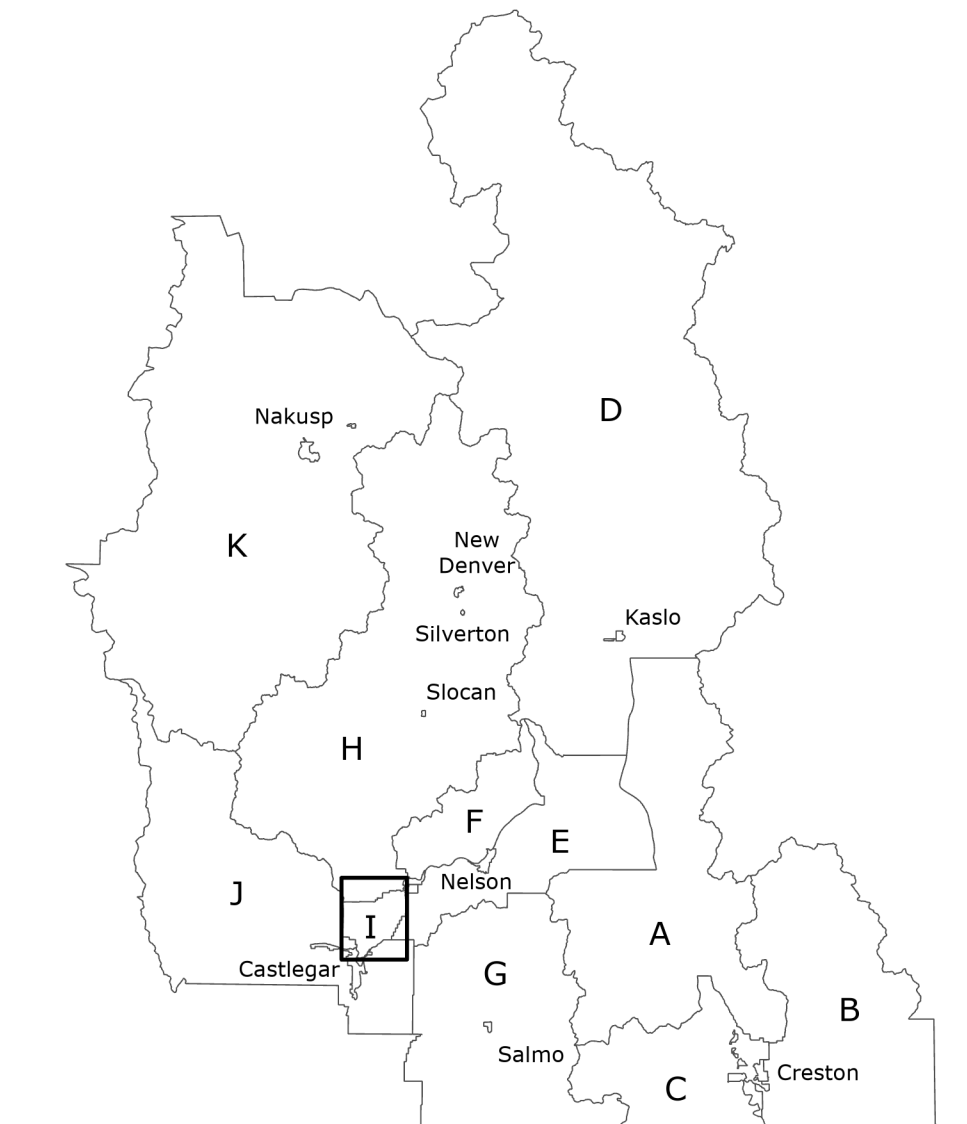
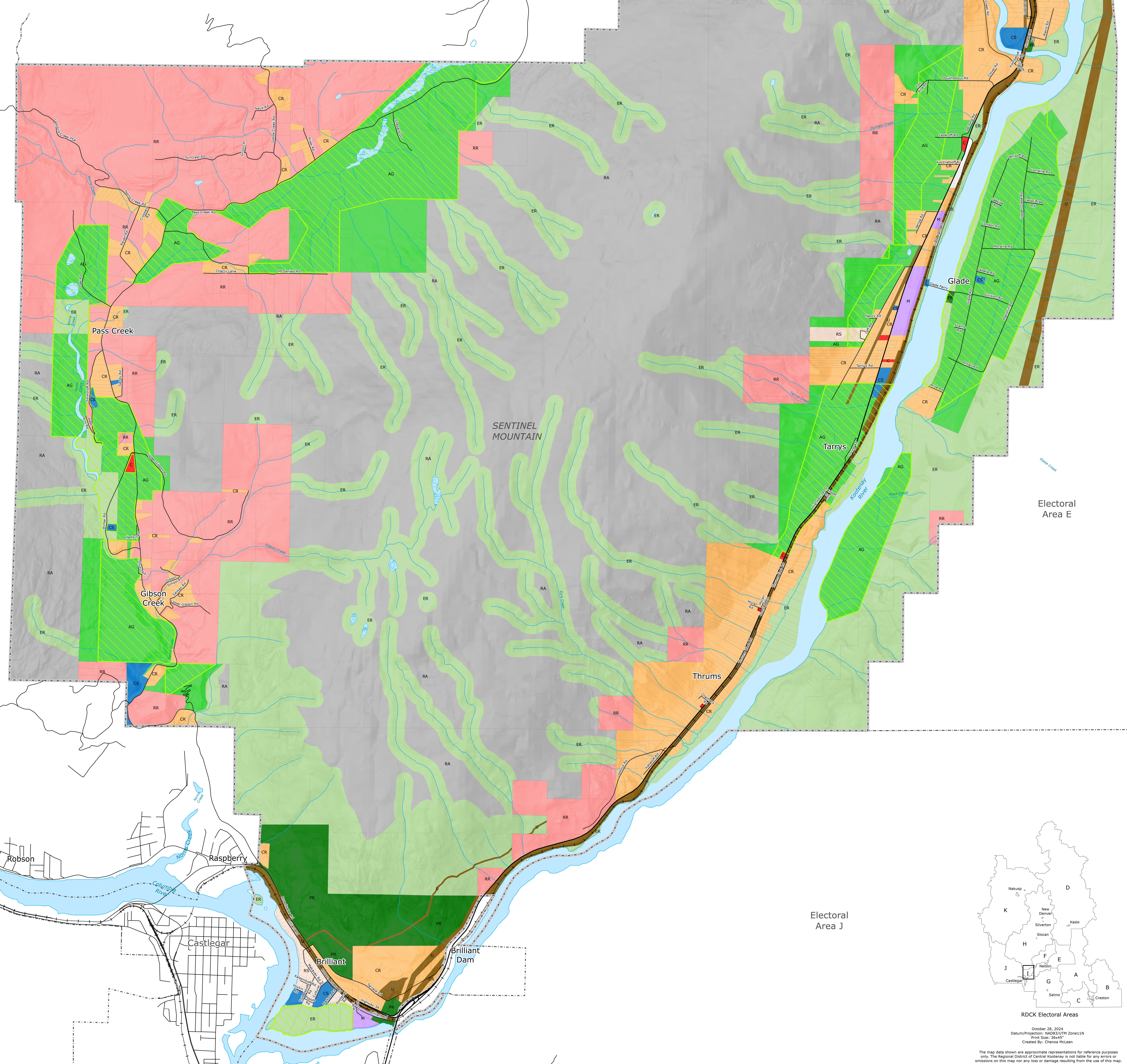
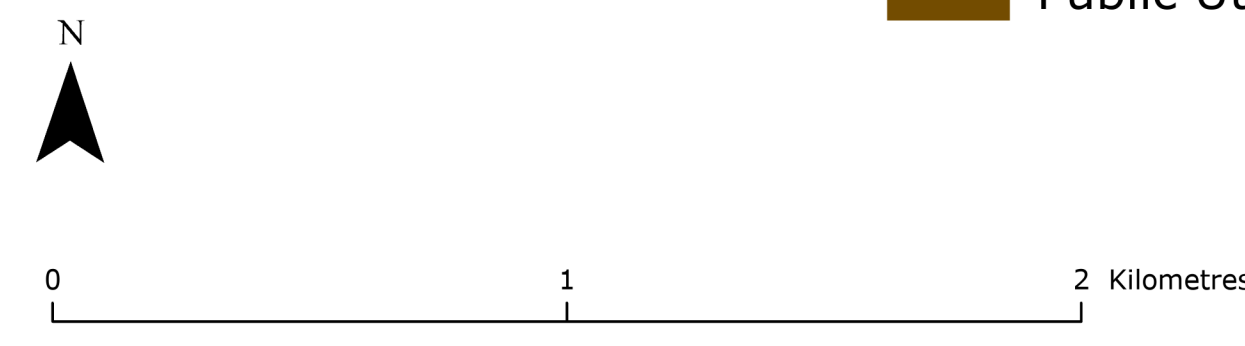
Schedule A.2 - Area I Official Community Plan  
Bylaw No. 2821, 2024

No community water and sewer systems in the plan area.

- Electoral Area I
- Electoral Boundary
- Cadastre
- River or Lake
- Wetland
- Stream or Shoreline
- Highway
- Road
- Railway
- ALR Boundary

### Future Land Use Designation

- Agricultural (AG)
- Commercial (C)
- Country Residential (CR)
- Community Services (CS)
- Environmental Reserve (ER)
- Industrial (M)
- Parks and Recreation (PR)
- Resource Area (RA)
- Rural Residential (RR)
- Suburban Residential (RS)
- Public Utilities (U)



October 28, 2024  
 Datum/Projection: NAD83/UTM Zone11N  
 Print Size: 36x45"  
 Created By: Chenoa McLean

The map data shown are approximate representations for reference purposes only. The Regional District of Central Kootenay is not liable for any errors or omissions on this map nor any loss or damage resulting from the use of this map.